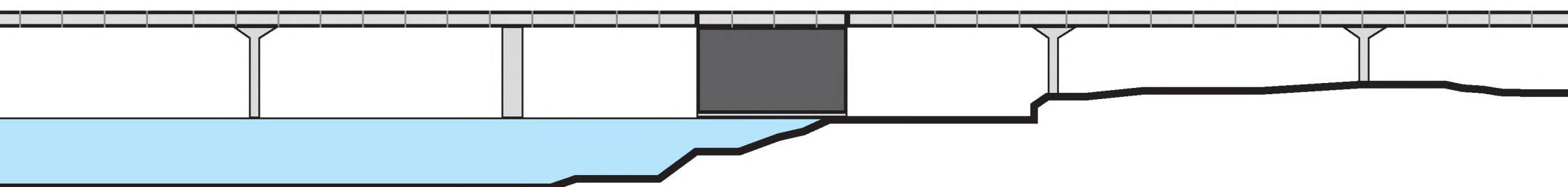
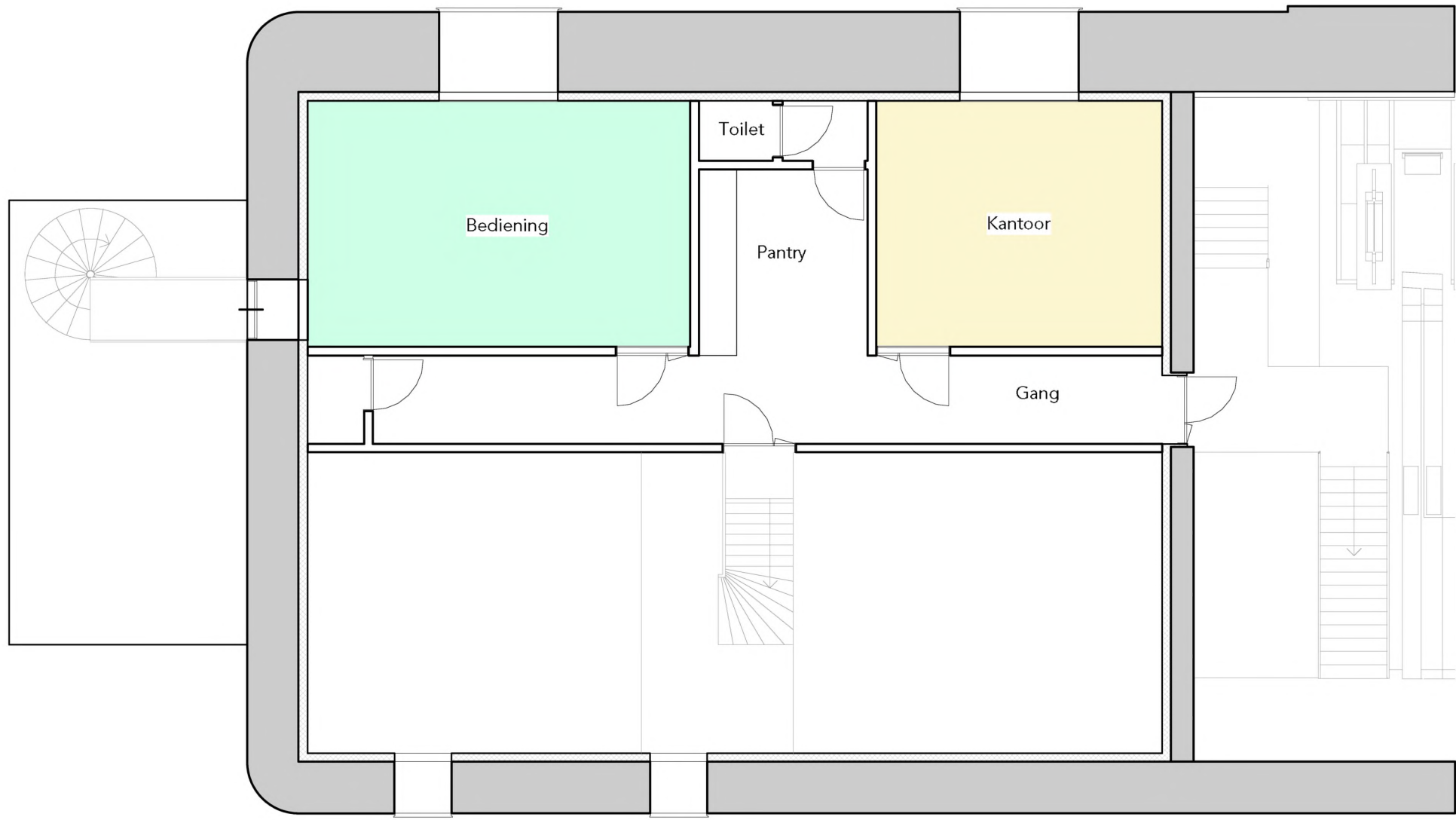


KW01

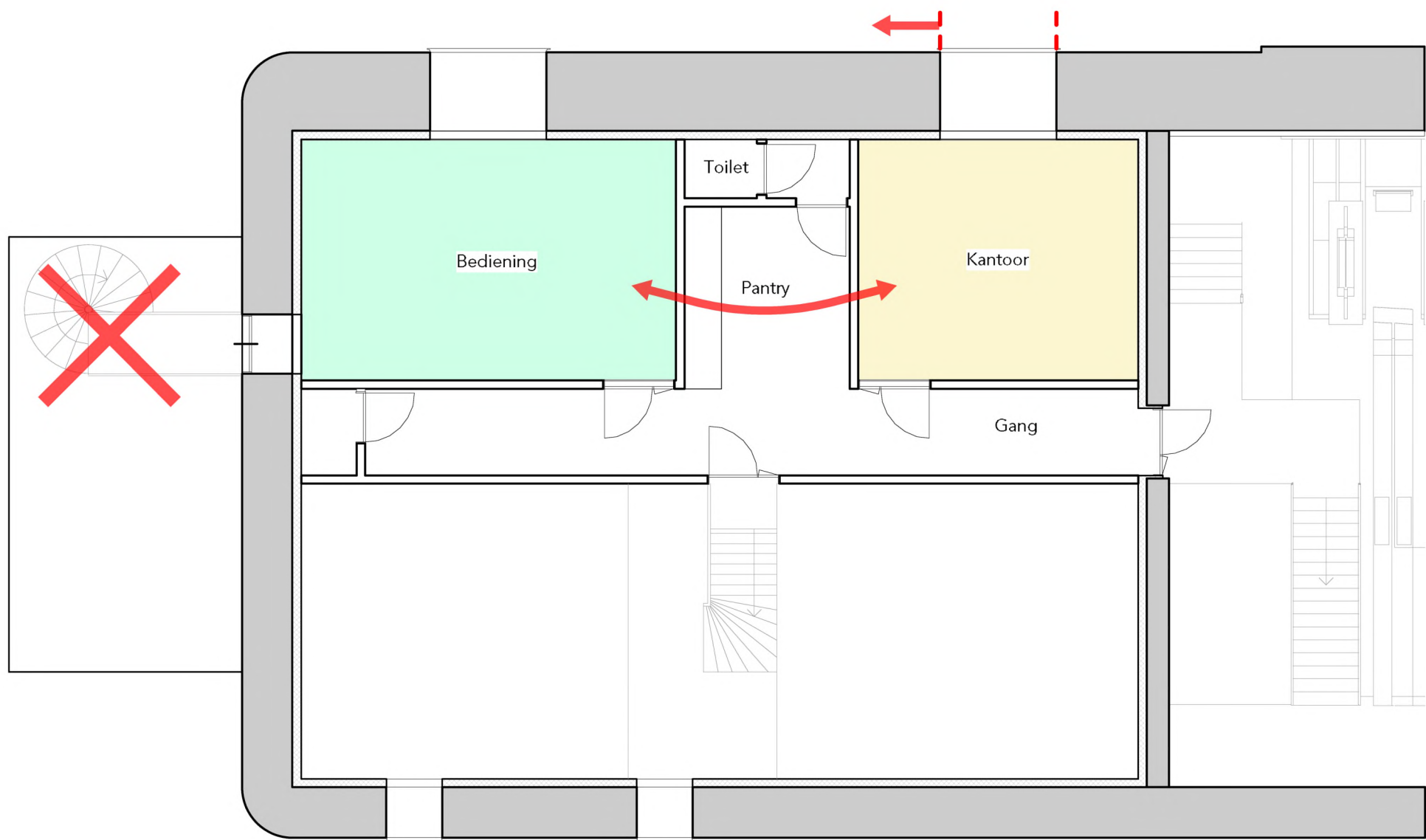
Schipholbrug

Plattegrond niveau kelder zonder buitentrapp

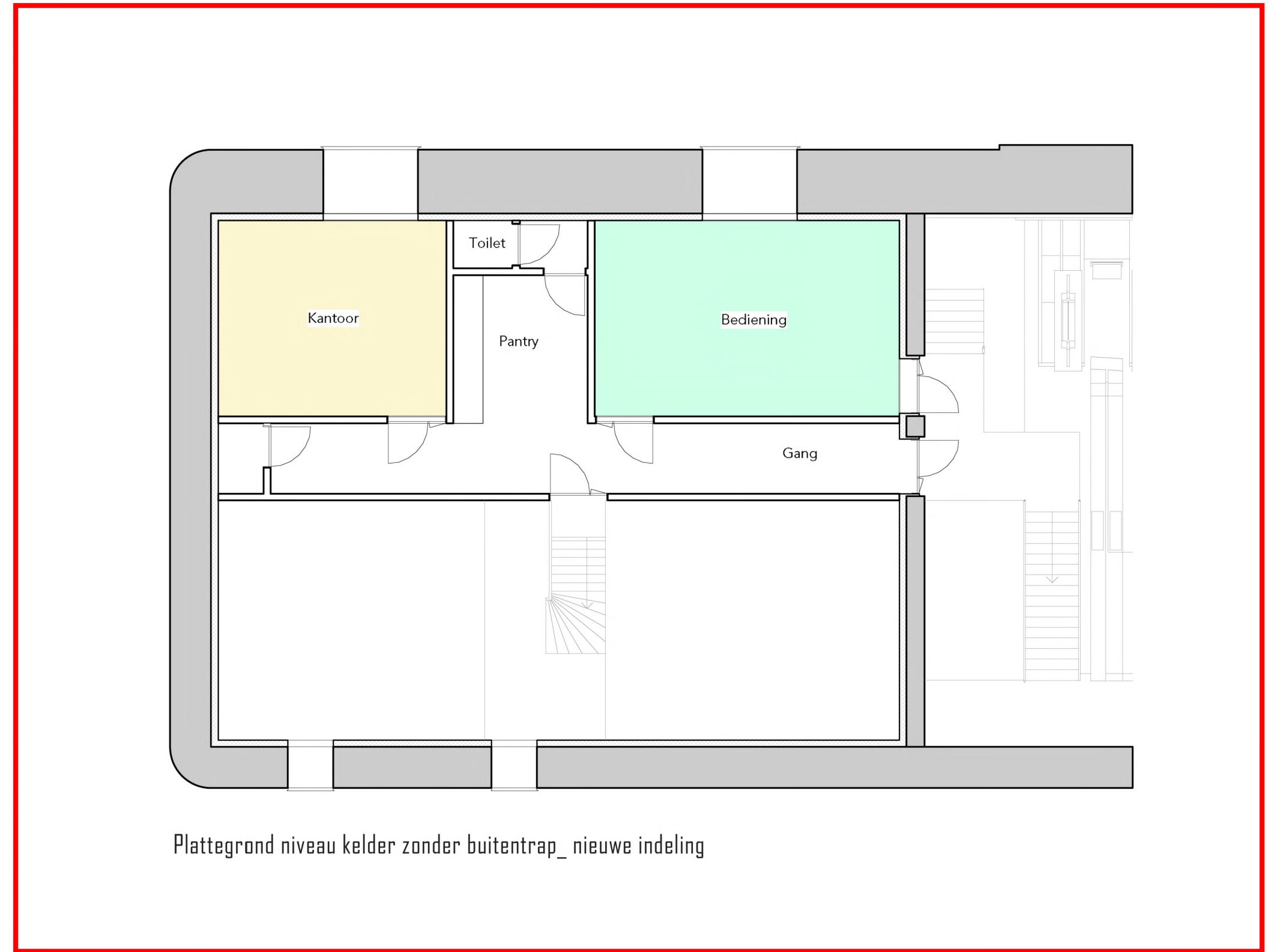




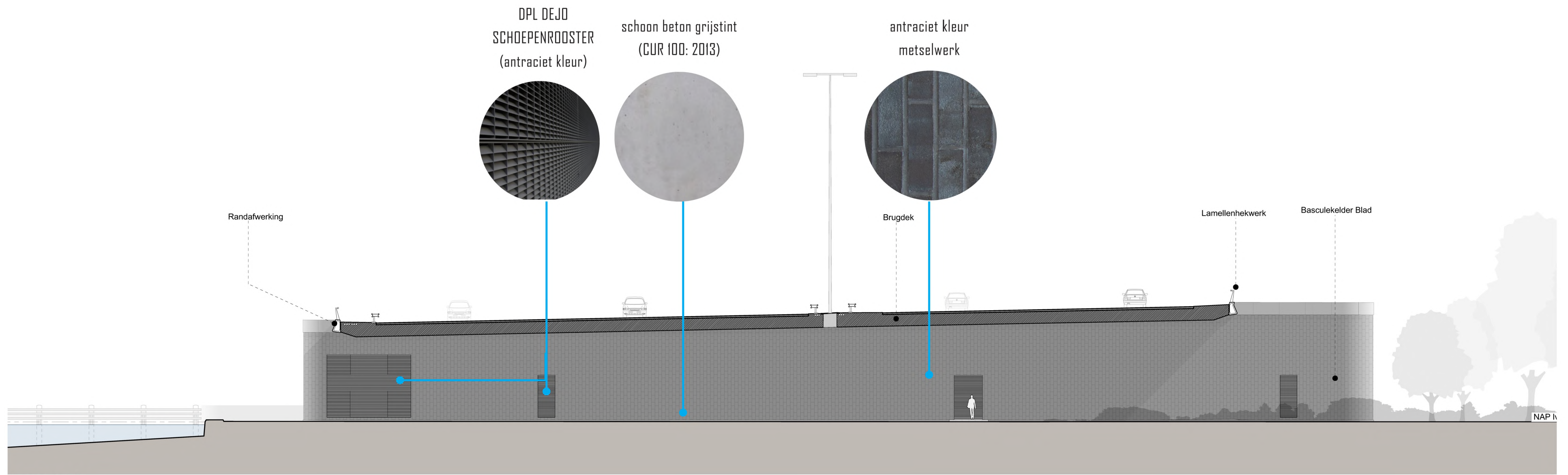
Plattegrond niveau kelder_huidige indeling



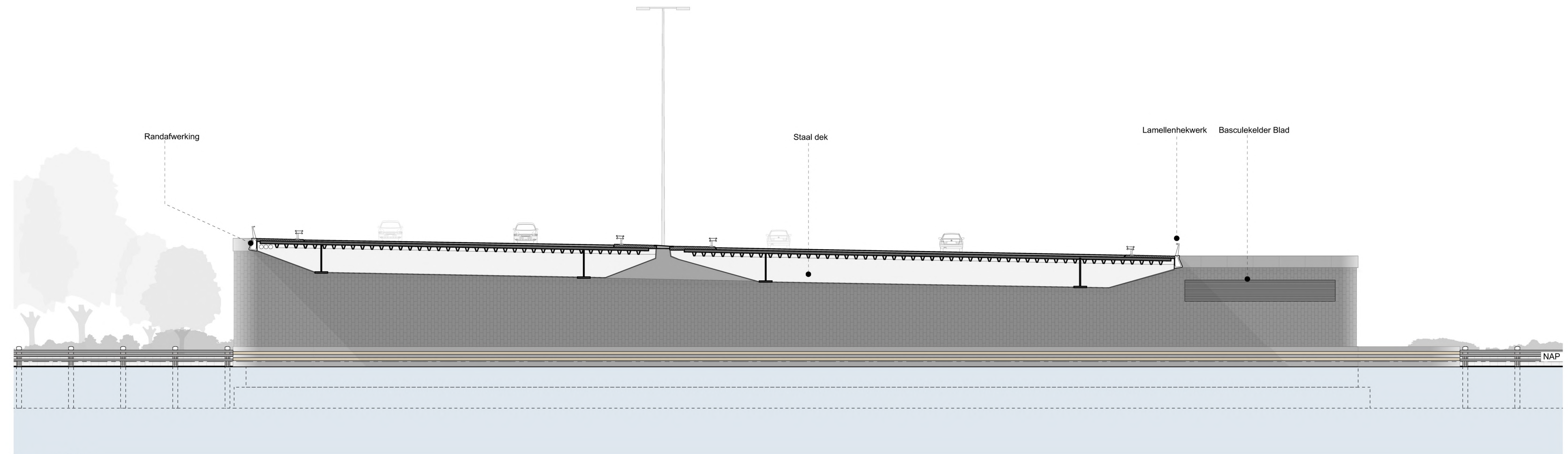
Plattegrond niveau kelder_aanpassingen



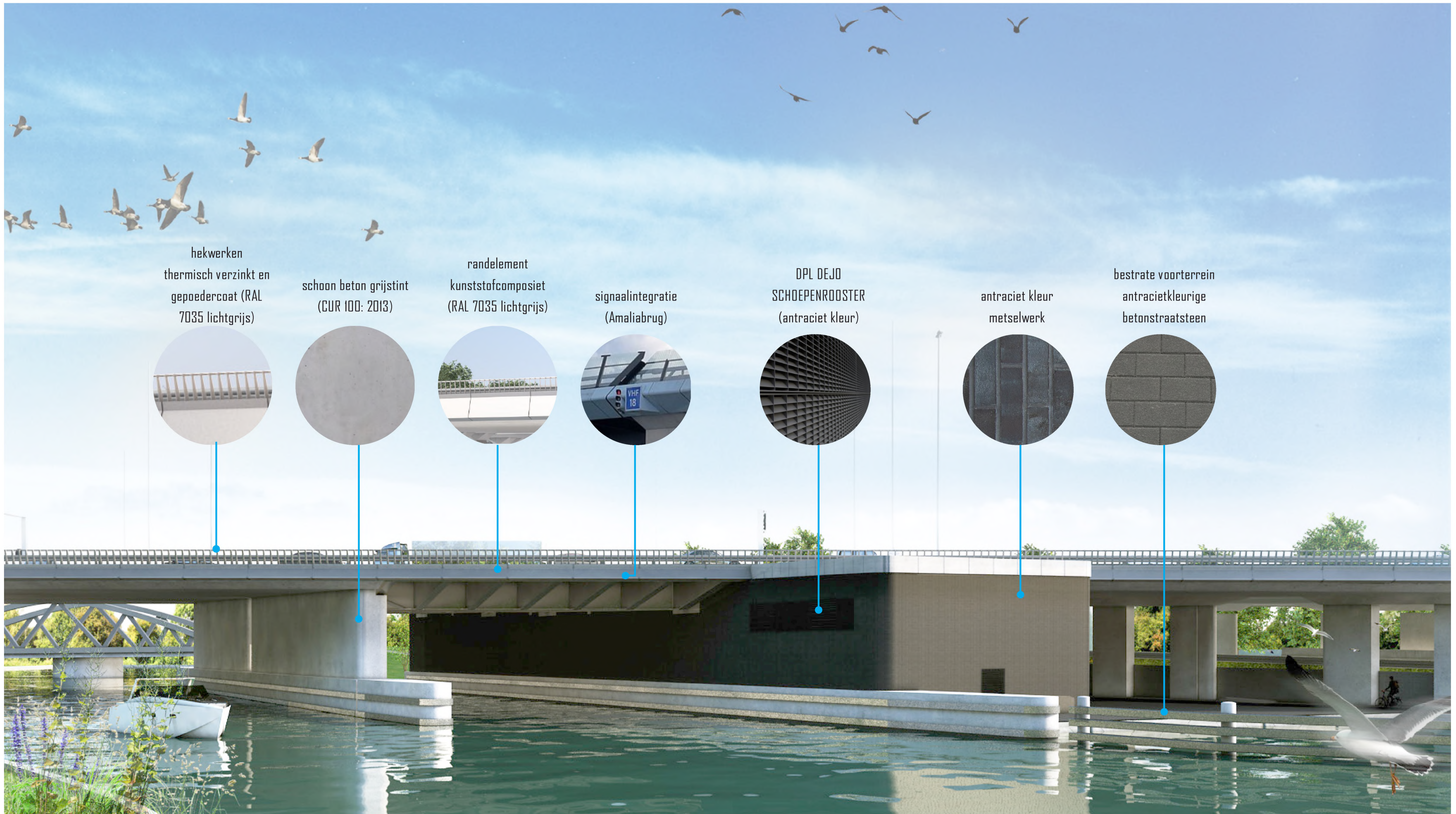
Plattegrond niveau kelder zonder buitentrap_nieuwe indeling



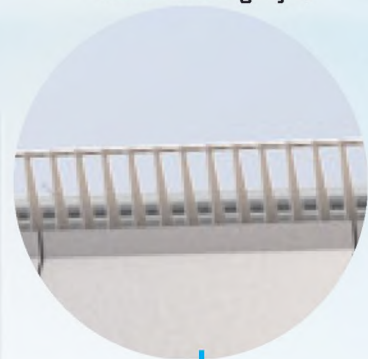
Doorsnede FF'



Doorsnede GG'



hekwerken
thermisch verzinkt en
gepoedercoat (RAL
7035 lichtgrijs)



schoon beton grijs
(CUR 100: 2013)



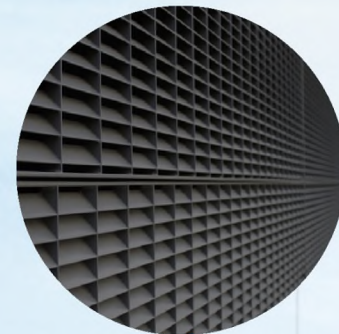
randelement
kunststofcomposiet
(RAL 7035 lichtgrijs)



signaalintegratie
(Amaliabrug)



DPL DEJO
SCHOEPEIROOSTER
(antraciet kleur)



antraciet kleur
metselwerk

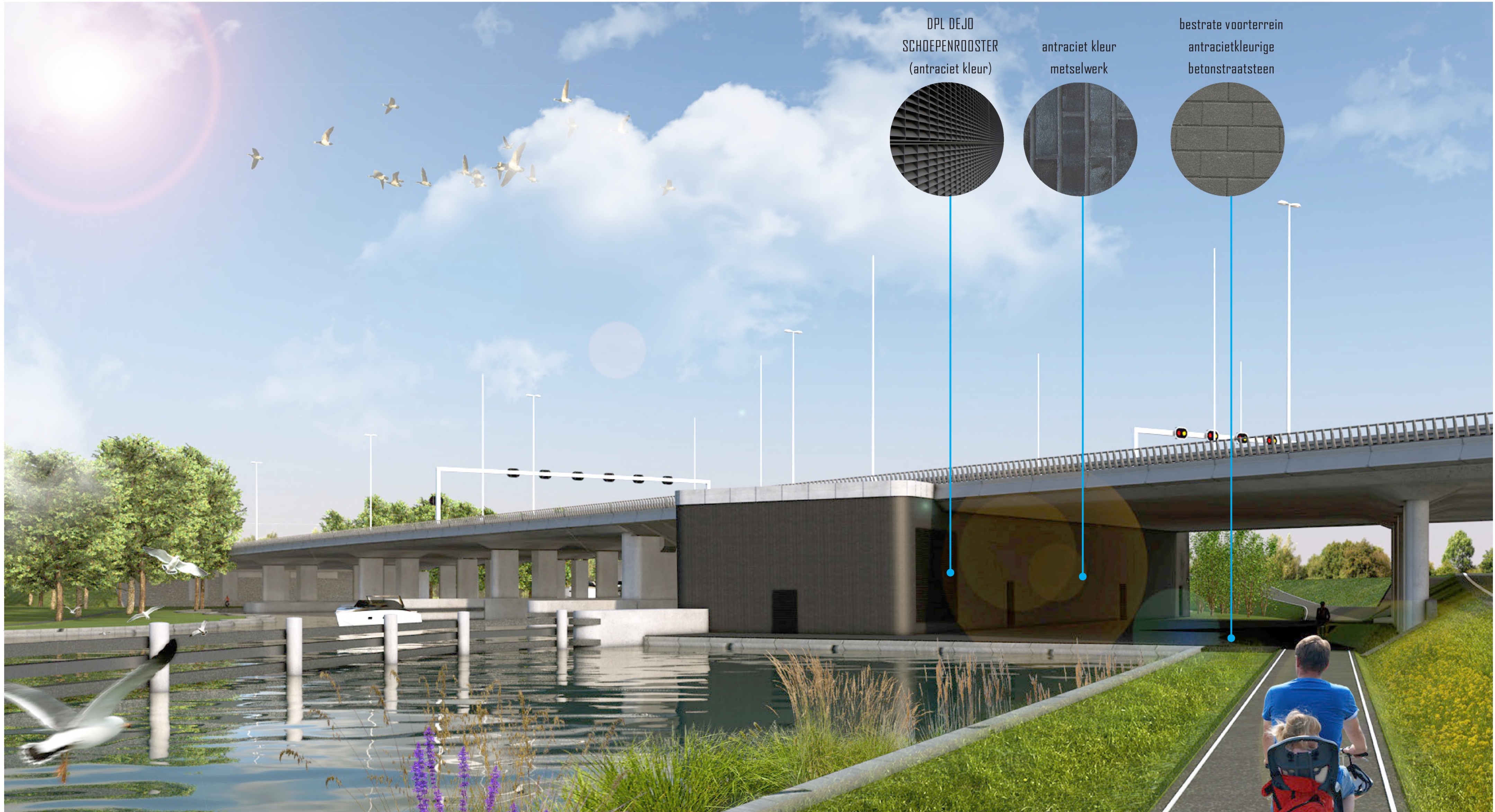


bestrate voorterrein
antracietkleurige
betonstraatsteen

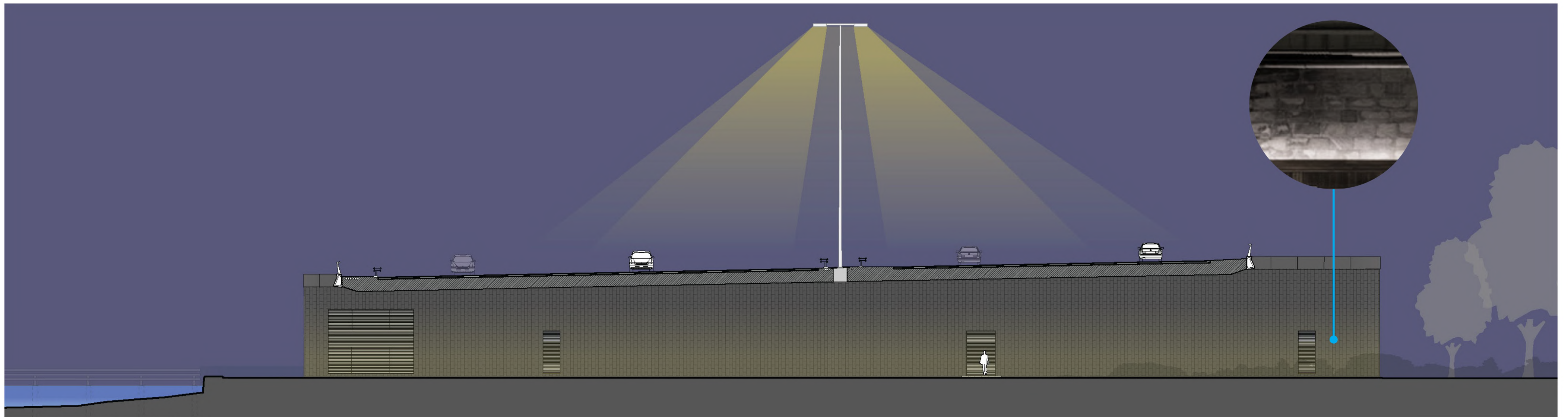




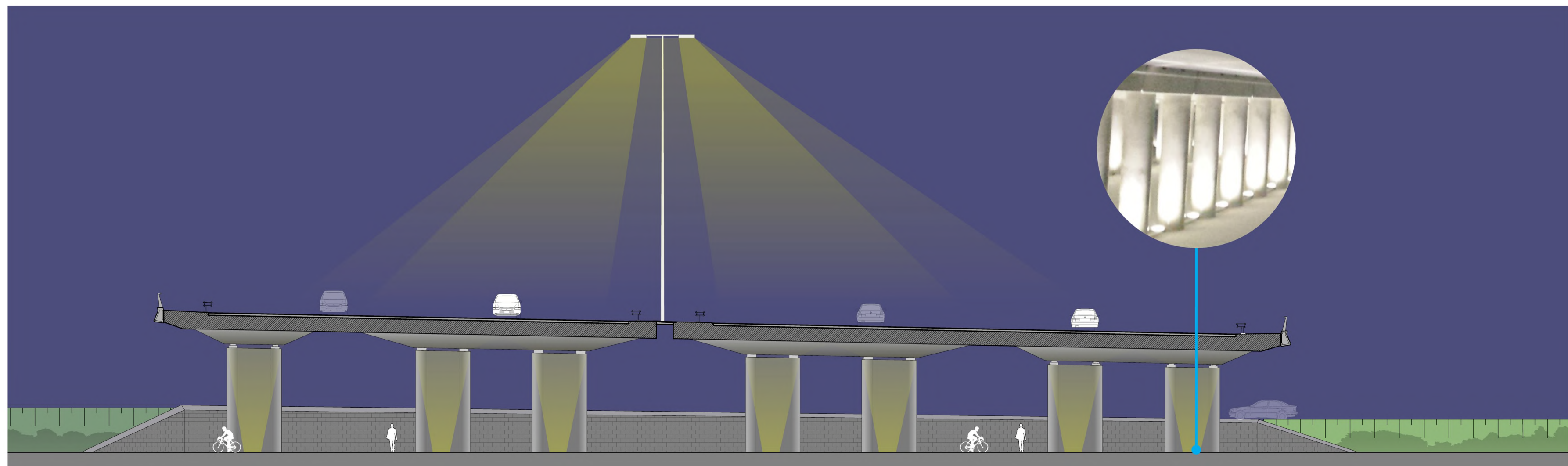
Impressie KW01 _ noord kant en open brug



Impressie KW01 _ over west fietspad



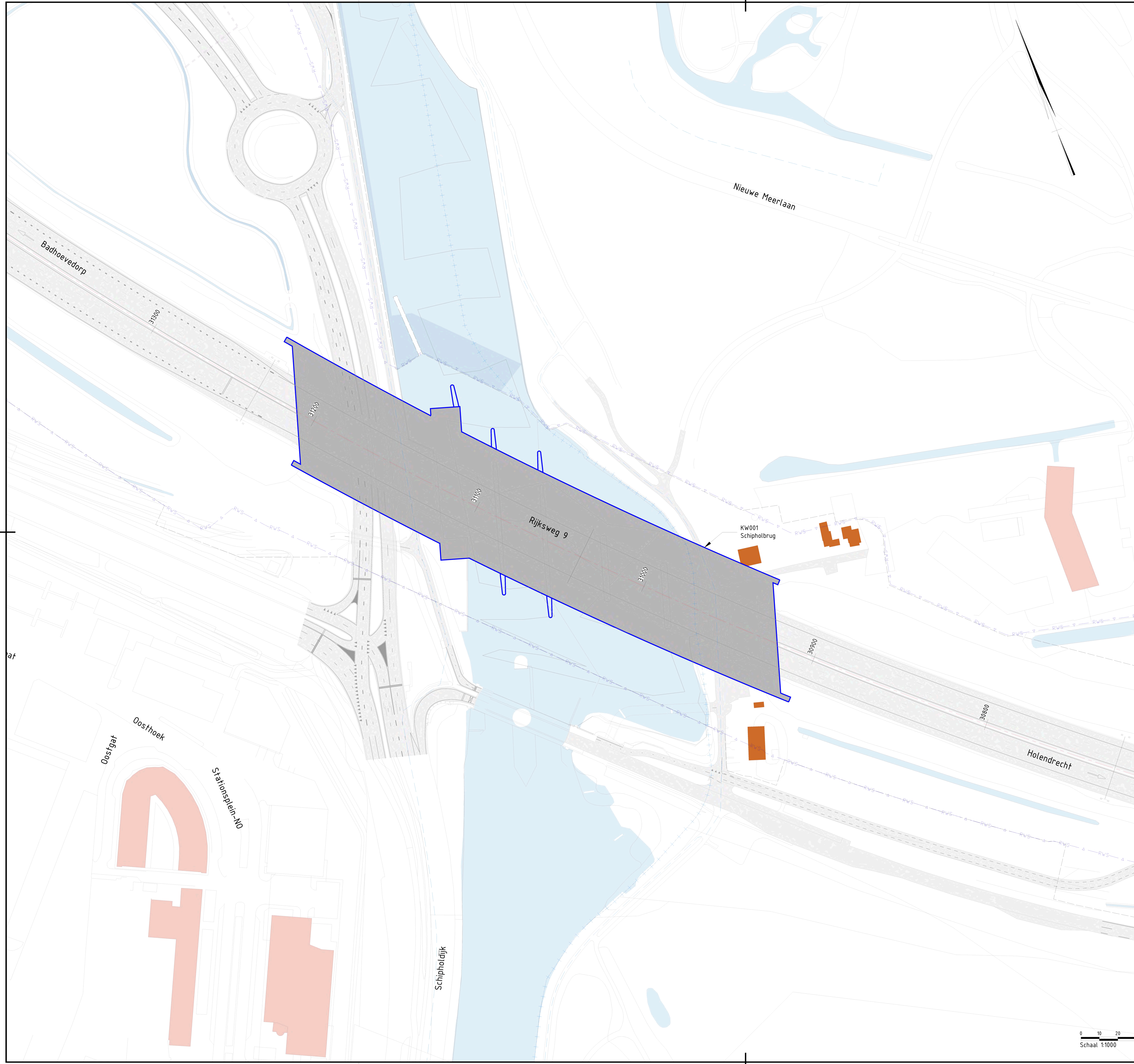
Aanzicht basculekelder (verlichting)



Doorsnede kolom naast basculekelder (uplight)



Impressie KW01 _ nachtverlichting



1.0	30-11-2020	Schipholbrug in bestaande situatie	EvdB	FPe	MAa	JvdK	3/4/1
Versie	Datum	Omschrijving	Opsteller				

BASELINE 1.009

Maten in meters, tenzij anders aangegeven / Size in meters unless otherwise specified
 Materialen in millimeters / Materials in millimeters
 Hoogtematen in meters t.o.v. N.A.P. / Height dimensions to N.A.P.

DEFINITIEF



documentcodering : 370610-SWECO-HML-140-SI-CH-00015
 As-built n.v.f.
 A9 BaHo
 Roads HWN
 Situatie bij KW001 / Situation at KW001
 Hm. 31.390 - Hm. 30.750

A9 Badhoevedorp - Holendrecht	
Projectnummer	31088539
Documentsoort	Tekening
Schaal	1:1000
Formaat	A1 (594x841)
In	01 bladen, blad nr: 01
Geneten	n.v.f.
Versie	1.0

Documentnaam: A9BH-PW-0000-DI-ML-DW-140-SI-CH-0001501

